



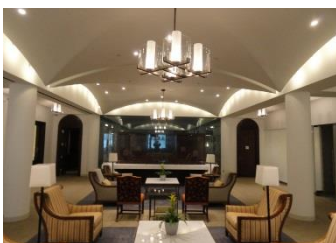
OFFICE SPACE FIT-OUT

CHURCH PENSION GROUP

Interior construction fit-out of approximately 120,000-SF of office space across five floors. These offices support the organization's operations of administering pension benefits to eligible clergy of the Episcopal Church.

The project represents a traditional corporate office setting with specifics including a 75/25% open to enclosed office space mix with open systems furniture, 2 mechanical, electrical and telecom rooms per floor, large divisible training room, small conference rooms, board room, cafeteria and pantries and mechanical equipment rooms.

Acoustics, audio/video system design and teleconferencing capabilities for spaces including 17 boardrooms, a lunch room, a cluster of subdivide-able training rooms and 5 digital signage for lobby display set-ups. Components for audio and video systems include reinforcement/playback loudspeakers, assorted mixing and processing equipment, assorted playback and production equipment, hearing assistance and audio description system, film/video/data projection systems, film/video/data display systems and audio and video control systems.



CLIENT

Church Pension Group

LOCATION

New York, NY

PROJECT TYPE

Renovation / Fit-out

COMPLETE

2013

CONTACT

Reverend Clayton Crawley
Church Pension Group
800.223.6602

SCOPE

Acoustics
Audio
Video